

# TEE TO GREEN



The Official Publication of the South Texas Golf Course Superintendents Association



Bayou Golf Course

## Another Successful Scholarship Tournament!

\$\$\$\$\$\$\$\$

Once again South Texas Members raised over \$24,000 at the Annual Scholarship Tournament and Live Auction! We would like to thank all that donated, participated in golf, bought auction items and supported our effort! It is truly a team effort and without all of those, we would not be so fortunate! If you have a student getting ready for, or in college, don't forget to get the scholarship application in early! The September 1st deadline approaches quickly. Now is a good time, too, to order that "official" transcript and have it sent directly to the office. Scholarship criteria and a summary of requirements are shown in this issue on page 7. There is also an easy link to download and print the full application.

Next up is Bayou Golf Course in Texas City and it will be great to see Larry Boyle and his course! Sign up for the event on page 5.

Hopefully you have already signed up for the Lone Star Texas Cup on May 4th at Ridgewood! If you haven't, [Click here](#) and get your registration in today!

We still need a host site for our Annual Meeting this year. If you are interested, contact any Board Member or the office. We are also looking for meeting sites for 2016!

Interested in getting on the Board of Directors? Just let any Board member know and we will get you on the ballot for 2016.

### Meeting Schedule

May 4, 2015

Lone Star Texas Cup  
Ridgewood GC, Waco

May 19, 2015

Bayou Golf Course  
[Map to Bayou Golf Course](#)

June 16, 2015

The Wilderness Golf Club  
Chapter Championship

July—Member/Guest

August 10, 2015—Supt/Pro-Member/Member Tournament  
Sugar Creek CC

September 20, 21, 22, 2015

Lone Star Texas Trophy  
Horseshoe Bay Resort

October—Annual Meeting and Past Presidents Lunch

November 9—Glow Ball !!

Riverbend CC

[Register Now for Any Meeting!](#)

## President's Message: Ben Fultz

This winter and spring has been one for the books when it comes to rain fall. You have to love Texas weather. We will always catch up with our rain deficit in matter of days and then end up with excess. It would be nice to save some of this excess for July/August when we are going to need it.

This Saturday May 2 at 9:30am we will be working on the garden for Camp Hope. We were not able to work on the last scheduled date due to rain. We are looking for any volunteers that would like to come out and donate a few hours of their time. This is a great cause and a great way we can all help some veterans that gave their time for our country. This garden will be a big help and wonderful form of therapy for the those staying at Camp Hope to overcome their PTSD. It's a gift that keeps on giving. Who knows, we could inspire some future landscapers or golf course superintendents from this. If you are interested in helping please contact anyone on the board of directors or board. Our next meeting is right around the corner on May 19<sup>th</sup> at Bayou Golf Course. Larry Boyle will be hosting the event. This would be a good time to put your name "in the hat" for a Board of Directors position next year. Just a reminder to start getting those scholarship applications early this year so the date of September 1<sup>st</sup> doesn't "creep" up on your student!



# Fleet<sup>®</sup> First

*Start in control and stay in control of rootzone moisture*

### Features

- Multi-branch structure
- Advanced hydrophobic coating solubilizer
- Unique soil conditioner
- Non-phytotoxic
- Flexible application rates

### Benefits

- Provides fast and firm putting surfaces
- Increases deep moisture penetration
- Increases uniform moisture distribution
- Provides hydration at all soil depths
- Increases soil oxygen
- Provides consistent performance over application interval
- Helps minimize the key cause of LDS
- Helps neutralize soil bicarbonates
- Improves turf color and quality



Houston Warehouse  
16684 Air Center Blvd. Suite 200  
Houston, TX 77032

Contact your Harrell's representative for more information



Clint Neely  
(832) 728-5640  
cneely@harrells.com



Stephen Dolen  
(713) 828-9941  
sdolen@harrells.com



**1-800-621-5994**

Visit our website @  
[www.gailsflags.com](http://www.gailsflags.com)

**Houston Area**

**Brent Ratcliff**

713 - 819 - 1988

[brentratcliff@comcast.net](mailto:brentratcliff@comcast.net)

**Chris Mrosko**

713 - 898 - 6252

[cmrosko@cebridge.net](mailto:cmrosko@cebridge.net)



**Ed Schultheis**

713.299.6298

[edschultheis@siteworksllc.net](mailto:edschultheis@siteworksllc.net)



**BSI**  
Burnside Services, Inc.

- Mass Grading
- Site Construction
- Golf Course Construction
- Athletic Field Construction

1110 Navasota Ridge Rd., Navasota, TX 77868  
Office: 936-825-7090 • Fax: 936-825-8838  
E-mail: [bsi@burnside-services.com](mailto:bsi@burnside-services.com)  
[www.burnside-services.com](http://www.burnside-services.com)

**TEXAS CHAPTER DIRECTORY**

Central Texas GCSA (Carol Cloud)-512.215.4612—

[www.ctgcsa.org](http://www.ctgcsa.org)

Lone Star GCSA (Marian Taku-shi) -281.494.0094-

[www.lsgcsa.org](http://www.lsgcsa.org)

North Texas GCSA (Carol Cloud) 817.377.4552 [www.ntgcsa.org](http://www.ntgcsa.org)

Texas Gulf Coast SA (Darlene Curlee)-877.448.9944

[www.tgcsa.org](http://www.tgcsa.org)

Texas Turf Grass Association (Shirley Duble)-979.690.2201

[www.texasurf.com](http://www.texasurf.com)

West Texas GCSA (Tessa)-

[www.wtgcsa.org](http://www.wtgcsa.org)



**2015 | EARTH DAY**

Highlighting golf's environmental stewardship

**5 facts about golf  
for Earth Day (April 22)**

When American writer Mark Twain pronounced that a round of golf was "a good walk spoiled," he clearly didn't have all the facts. Today, we know that walking a round of golf can burn more than 2,000 calories

1. Golf courses are professionally managed landscapes where environmental stewardship is important – from using water and nutrients efficiently to implementing better methods of erosion control.
2. In general, the golf industry is striving to deliver firm and fast playing surfaces that are better for everyone and improve the bottom line. More than two-thirds of golf courses report that they are keeping turfgrass drier than in the past.
3. The golf industry is continually investing in research to identify drought-tolerant grasses, promote water conservation and improve best management practices.
4. Golf courses provide habitats for wildlife, including protected species.
5. Many golf courses have recycling programs to reduce and reuse.

Source: *Golf facts by the Golf Course Superintendents Association of America*



## Golf Results

April 14, 2015  
Tour 18 Golf Club



Thank you, Todd Stephens and all the staff at Tour 18 for an outstanding day!

STGCSA members raised more than \$24,000!

### Gross

First Place - 54—Sean Wilson, Josh Clark, Eric Ball, David Burbidge

Second Place - 56 – Kody Key, Justin Lonon, Billy Bancroft, Chad Barrum

Third Place – 57 scorecard playoff  
Blayne Sparks, Jason Burgess, Mike McCleary, John Stark

Fourth Place - 57—Doug Browne, Bobby Browne, Steve Smith, Brad Dumond

### Net

First Place - 44—Brent Ratcliff, Chris Mrosko, Jordon Droll, Brian McCloud

Second Place – 47.25 - David Gray, Jerry Huntsman, Rusty Denner, Ray Sarno

Third Place – 47.5—Jeff Smith, Scott Sipes, Steve Vaughn, Kevin Lyles

Fourth Place - 48—John Freeman, Bill Freeman, Shawn Freeman, Mike Anderson

### Proximity Winners

#1 – Pros Only, CTP 2<sup>nd</sup> shot  
Ray Sarno

#2 - Long Drive  
Steve Allums

#3 - CTP 2nd shot  
Braeden Riley

#4 – CTP 2<sup>nd</sup> shot  
Dan Olson

#5 - CTP 2<sup>nd</sup> Shot  
Eric Geiger

#6 – Pros Only CTP  
Billy Mooney

#7 – Pros Only Long Drive  
Eric Ball

#8 CTP 2nd shot  
Eric Ball

#9 - CTP  
Kevin Duke

#10 - Long Drive  
Kody Key

#11 - CTP  
Brad Dumond

#12 - CTP 2nd shot  
Johnny Walker

#13 - Long Drive  
David Burbidge

#14 - CTP 2nd shot  
Tommy Homeyer

#15 - CTP 2nd shot  
Blayne Sparks

#16 CTP 2<sup>nd</sup> shot  
Sean Wilson

#17 CTP  
Ben Fultz

#18 CTP 2nd shot  
Kevin Borowski

### Random Draw Winners

High Meadow Ranch: Cody Spivey, Casey Wade, Jackie Smith, Matt Luca

Timber Creek GC – Andy Coz, Courtney White, Billy Stoker, Billy Mooney



Register today for Bayou Golf Club

May 19, 2015—Host: Larry Boyle

[Click here to Register!](#)

Registration 9:30, Meeting 10:00, Golf 12:00

### **Bayou Golf Course**

Bayou Golf Course was originally designed by Joe Finger and was constructed and opened for play in 1974. In April of 2014 the City of Texas City endorsed a renovation for Bayou Golf Course. The \$869,000 renovation was marshalled by Houston based architect Mike Nuzzo.

The main emphasis of the renovation was to create consistency on the putting surfaces. The greens on the first eight holes were increased in size and all of the greens were planted with Mini-Verde Bermudagrass.

In addition, all of the sand bunkers were reshaped, drainage and new sand installed. Several bunkers were eliminated and new bunkers were added to the fifth hole.

There was a leveling and expansion of tees on six holes (#5, 7, 10, 13, 16 and 17). Fairways on holes #10, 15, 17 and 18 were leveled and re-grassed with 419 Bermudagrass. Several fairways (#1, 3, 4, 6 and 18) have been raised and widened to correct salinity issues and are being established with Paspalum grass.

This Spring, Bayou Golf will put the final touches on a one of a kind practice facility that offers a 13,000 sq. ft. tournament putting green as well as a 5.5 acre walking family Pitch-n-Putt 9 hole golf course. This edition will benefit the skilled golfer as well as the beginning golfer.

Bayou Golf Course re-opened in October 2014 to rave reviews thanks to the newfound playability and conditioning.

### **Larry Boyle**

Born and raised in the Dallas area. Began working on golf courses in 1967 at Club Corp's Brookhaven C.C.

Earned a BS in Agronomy (Turf-Grass Science) from Texas A&M University in 1974 and a Masters of Agriculture in Agricultural Economics in 1979.

Worked for Club Corp (CCA) for over 32 years in addition to other Clubs.

Moved to the Houston area in 1987 and have worked for Willow Creek Golf Club 11 yrs., Northgate Forest for one year, Bay Oaks C.C. for 9 years and Bayou Golf Club for the last 8 years.





Authorized full line distributors for the following brands:



Chris Mrosko 713.898.6252 Chris@ameriturf.com

Brent Ratcliff 713.819.1988 Brent@ameriturf.com

Office (877) 441-8873 www.ameriturf.com

Revolutionary Fertility Programs — Water Management Solutions — Plant Protection



This is Helena Houston & We've Got You Covered!

**Colt Phillips**  
phillipsCB@helenachemical.com  
832-596-8532

**Eric Glover**  
glovere@helenachemical.com  
409-766-0828

**Chris Webster**  
websterc@helenachemical.com  
281-785-2095



Helena, CoRoN, KickStand, Reservoir and People...Products...Knowledge... are registered trademarks of Helena Holding Company. Renova is a registered trademark of Valagro. Always read and follow label directions. © 2015 Helena Holding Company.

People... Products... Knowledge®

**WORLD-CLASS PRODUCTS.  
WORLD-CLASS SERVICE.**



Jacobsen is now serving golf, turf, municipal and commercial customers directly in Houston.

We stock a comprehensive inventory of Jacobsen and allied parts and pledge to get what you need in short order. We offer standard equipment service, full hydraulic testing and repair, and employ the latest grinding technologies on all makes and models of reels.

This change is part of Jacobsen and Textron's long-term commitment to provide Houston customers with quality products and services. Call us at 704.574.4078 or visit www.JacobsenTexas.com for more information.



704.574.4078 | www.JacobsenTexas.com



## Government Relations Update

### Rodney Crow, CGCS



For many, the month of April is the official start of the spring season, but for a golf course superintendent, April is golf month! Golf catapults onto the big stage in April with several prestigious events: most notably, The Masters Tournament and National Golf Day. Both are influential in their own rights, but National Golf Day allows the average golf course superintendent a unique opportunity that The Masters tournament does not: the ability to be directly involved!

On April 15<sup>th</sup> 2015, “WE ARE GOLF”, a coalition of the game’s leading associations and industry partners – visited Capitol Hill for the eighth annual National Golf Day to discuss golf’s nearly \$70 billion economy, \$4 billion annual charitable impact, environmental value to local communities and fitness benefits with lawmakers. The coalition includes representatives from the GCSAA, the Club Managers Association of America, the Professional Golfers Association of America, the PGA Tour, the Ladies PGA, the National Golf Course Owners Association, the United States Golf Association, and many other golf related entities. This year, 26 golf course superintendents from around the country, along with GCSAA Staff, GCSAA Leadership and GCSAA Board of Directors made the journey to Washington D.C. to help spread the message of how golf impacts our world. Not only has National Golf Day increased the awareness for positives that the golf industry provides, it has also increased the rapport that our industry has with lawmakers. “National Golf Day is critical to our advocacy efforts for the golf industry,” said Chava McKeel, director of government relations at GCSAA. How can a golf course superintendent from Texas help? Funny you should ask!!

In the summer of 2014, the GCSAA embarked on an advocacy program whose goal is to get golf course superintendents involved on a local level with congressional representatives. In doing this, the GCSAA hopes to “proactively build strong relationships between them to elevate the GCSAA’s government relations advocacy efforts”. This program became known as the Grassroots Ambassador Program. Since this time, three “classes” of Grassroots Ambassadors have been initiated into the program and assigned to a specific Member of Congress. Currently, Texas is divided into 36 Congressional districts. As of National Golf Day, only 5 Grassroots Ambassadors have been initiated Texas. This is YOUR chance to get involved in shaping the future of OUR industry for years to come and will give you the chance to:

- Learn about legislative and regulatory issues affecting the golf course management profession
- Learn about GCSAA's advocacy activities
- Actively participate in the association's government relations efforts

One of the biggest government relations issues that looms on the near horizon is the newly proposed rule by the U.S. Environment Protection Agency (EPA) and the U.S. Army Corps of Engineers concerning the Clean Water Act. The proposed rule would redefine the “Waters of the U.S.” (WOTUS) and make almost every river, stream, creek, wetland, pond, non-wetland swale, and ditch in the United States fall under the jurisdiction of the federal government (even those on PRIVATE LAND!). What does this mean? Golf courses that have these waters on or near them would now be required to obtain costly, federal permits for any land management activities or land use decisions made. Land management activities could include such things as mowing, aquatic weed control, revitalization of banks, or installations of barriers. GCSAA worked with the CMAA, NGCOA, NCA, GCBA, ASGCA and PGA of America to develop a comprehensive set of comments that outlined concerns with the proposed rule. The statement can be read here:

<https://www.dropbox.com/s/pjy7etdbcbjwpg/Golf%20Industry%20WOTUS%20comments%20-%20FINAL%20-%202011.14.14.pdf?dl=0>

It is critical that every golf course superintendent in Texas voice their concerns to their congressional representatives concerning WOTUS. As of now, there is no official date announced for a vote on this proposed rule, but I will keep you all updated as information becomes available.

## Lone Star GCSA Herbicide Resistance Grant for Texas Golf Courses: April 2015 Update

Dr. Casey Reynolds and Dr. Matt Elmore, Texas A&M Agrilife Extension



As a result of a 2015 research grant funded by the Lone Star Golf Course Superintendents Association and the USGA, a herbicide resistance survey of potentially resistant annual bluegrass populations is currently being conducted on Texas golf courses. As of April 2015, suspected herbicide resistant annual bluegrass plants (Figure 1) have been collected from at least 22 golf courses for resistance screening to ALS inhibitors, PS-II inhibitors, and others. Currently, of the 22 golf courses from which plants have been harvested, 13 of the courses are in the Houston-Sugar Land-Woodlands metroplex, 4 are in the Dallas-Fort Worth metroplex, and the remainder are from other Texas cities. The majority of these cases have suspected resistance to ALS-inhibitors (Monument™, Revolver™, etc.), but collections have also been made on golf courses with suspected resistance to Simazine (Princep™), Prodiamine (Barricade™), Glyphosate (Roundup™), and Oxadiazon (Ronstar™).

After harvest, annual bluegrass plants are planted in 1.5" diameter containers (Figure 2) and placed into a controlled environment growth chamber until maturity. Once the plants are mature, seeds are then collected and bagged (Figure 3) for resistance screening, which will occur later in 2015. As of April 2015, many of the samples currently in the growth chamber have yet to fully produce seed and as a result we are still collecting seed for further experiments. After all of the seed is harvested, herbicide resistance screening and dose-response assays will be conducted to determine the number of golf courses with possible resistance, as well as the extent to which resistance has evolved. Results of these experiments will be available throughout 2015, but as always please feel free to contact us with questions or comments. Thanks again for your support of this research.

# WATER

**O'DAY**  
**Drilling Company**  
INCORPORATED

**PATRICK O'DAY**

5923 CR 931  
Rosharon, Texas 77583

Tel: 281-485-1330

Tel: 800-856-6329

FAX: 281-485-0962

E-Mail: [patrick-oday@sbcglobal.net](mailto:patrick-oday@sbcglobal.net)



### STGCSA Volunteer "Shovers"

Shovers from all over the world converged March 30th thru April 5th to assist the tour players on the practice tee at the Shell Houston Open at the Golf Club of Houston. Fred Leonard, GCS and his staff had the course in great condition. Relentless and tireless the Shovers remained sturdy in the arena as golf balls were sorted, the hitting line remained policed and banter was exchanged. Golfers and their caddies from over the pond expressed their gratitude and learned what real southern hospitality is all about. Outstanding job Shovers (Jerry Huntsman, George Manuel, Doug Browne, Terry Gill, Gary Hargrove and Scott Anderson, David Gray)!

If you would like to participate in next year's event contact Jerry Huntsman for more information as a volunteer at one of the greatest venues in professional golf.

Remember, it's for the children.

Jerry Huntsman— [jerryh@elkinslake.net](mailto:jerryh@elkinslake.net)



## STGCSA Legacy Scholarship Criteria for Selection 2015



As described in the STGCSA Criteria for Selection of the Legacy Scholarship Award:

**“Selection methods may include (but will not be limited to) personal interviews, transcripts, essays, overall quality of application and neatness of prepared documents, as well as member participation. Scholarship awards will be determined by an independent committee.”**

The Scholarship Committee this year is placing increased emphasis on the member participation portion of the selection criteria for all awarded scholarships. Member participation is an integral key to the success of our association and is defined as a requirement of attending a minimum of three (3) meetings by the member during the scholarship year ending when the 2015 Legacy Scholarship Applications are due on September 1st, 2015. The "Scholarship Year" as it pertains to participation, is calculated from September 2014 through August 2015.

Member attendance will not be the only determining factor in awarding scholarships, but we, the Board of Director's, also request that each student awarded a scholarship be in attendance at the Annual Banquet to receive their check. If attendance of the student is not possible, the member/parent of the recipient will need to be present to receive the award on their behalf by no later than the January meeting of the following year. Scholarship checks will no longer be mailed to the recipient.

### **Summary of Eligibility Requirements**

Parent or Guardian of applicant must be an active GCSAA Class A, SM, C, AA or AF in good standing with the STGCSA for five or more consecutive years leading up to the year applying for the scholarship.

Students may be awarded the scholarship a maximum of five times.

The following items must be received at the STGCSA office by September 1, 2015 to be eligible to receive a scholarship:

Completed Application

1 page autobiography

For graduating high school seniors, an acceptance letter to an accredited institute of higher education

The following item must be received at the STGCSA office by October 1, 2015 to be eligible to receive a scholarship:

Official sealed transcript proving a minimum 2.0 GPA

Note: Official transcripts from a University (or High School) may take up to 6 weeks to arrive

**Incomplete applications or applications received after the due date will not be considered valid. There will be no exceptions to this rule.**

**[To Print a Full Scholarship Application, Click Here](#)**

# Precise Control

Pump Station Service

281.395.1199

*Celebrating 25 Years Servicing the Houston Area*

**Bob Meyer**

**Frank Bittner**

**Mobile: 713.829.8922**

**Mobile: 713.303.9882**

3004 S Saddlebrook Ln

Katy, TX 77494

[precisecontrol@comcast.net](mailto:precisecontrol@comcast.net)

# Same great products, prices and expertise.



**(Only our name has changed.)**

Since 1994, Neese Materials has provided quality sand products to golf courses throughout Texas. But now our name says what we do – *Texas Sports Sands*. Check out our new website or give us a call. The same knowledgeable staff is ready to help with your next project.

**Dennis Klene, South/Central Texas Sales Representative**  
 cell: (832) 794-9966 email: [dennis@texassportssands.com](mailto:dennis@texassportssands.com)  
 office: (972) 278-1585 website: [www.texassportssands.com](http://www.texassportssands.com)



Golf Sales  
713-943-7100

Golf Parts & Service  
281-353-0204  
800-313-9848

[JohnDeereGolf@BrooksideUSA.com](mailto:JohnDeereGolf@BrooksideUSA.com)

[www.BrooksideUSA.com](http://www.BrooksideUSA.com)  JOHN DEERE GOLF

Feed and Protect  
Your Greens & Fairways  
with **Quality Products**  
from Ewing

**Hunter**<sup>®</sup>



**QUALI-PRO**

**HJ**   
Howard Johnson's Enterprises



**FIND US:**  
[www.ewing1.com/texas](http://www.ewing1.com/texas)

**TALK TO US:**  
[golf@ewing1.com](mailto:golf@ewing1.com)



**Irrigation Supplies | Wireless Irrigation | Seed  
Fertilizer | PGRs | Insecticides | Fungicides**

**EWING**<sup>®</sup>  
[www.ewing1.com](http://www.ewing1.com) | 800.343.9464

## WE ARE GOLF hosts eighth annual National Golf Day on Capitol Hill

Golf News for Thursday, April 16, 2015 | [Events](#)

WASHINGTON, D.C. -- WE ARE GOLF - a coalition of the game's leading associations and industry partners - today visited Capitol Hill for the eighth annual National Golf Day to discuss golf's nearly \$70 billion economy, \$4 billion annual charitable impact, environmental value to local communities and fitness benefits.

Golf's leaders met with Members of Congress throughout the day to share stories about the game's 15,350 diverse, small businesses, which employ more than two million Americans and provide \$55.6 billion in annual wage income. In addition, industry executives discussed golf courses' positive influences on ecology, local tax revenues and tourism. They even explained how walking 18 holes can burn 2,000 calories.



This year's event also featured participation from The Presidents Cup 2015 Captains Nick Price (International) and Jay Haas (U.S.). South Korea will play host to The Presidents Cup later this year in October, the first time the tournament will be played in Asia.

"Golf is a vital part of our country's economy and today was a great reminder of that," says Congressman Chris Collins (R-NY). "What better way to discuss the game's economic, charitable and environmental findings than here in our nation's capital."

Organizations participating included the Club Managers Association of America, Golf Course Superintendents Association of America (GCSAA), Ladies Professional Golf Association, National Golf Course Owners Association, PGA of America (PGA), PGA TOUR, United States Golf Association, United States Golf Manufacturers Council, World Golf Foundation and others.

National Golf Day featured a day-long exhibit in the Rayburn Foyer with live lessons for Congressional Members and staff from 2012 PGA Teacher of the Year Michael Breed, host of "The Golf Fix" on Golf Channel and LPGA Teaching Professional Karen Palacios-Jansen. Special exhibits and activities included a "Closest to the Pin" contest on an aboutGolf simulator; state-of-the-art swing analysis from GolfTEC; National Arboretum's "Grassroots Initiative" overview; a Republican vs. Democrat "Putting Challenge;" and a turfgrass exhibit from the GCSAA.

"Today marked a unique opportunity to share golf's significant impact with political leaders," says Steve Mona, CEO of World Golf Foundation and administrator of WE ARE GOLF. "Our broad scope is reflected in the two million jobs supported by the game and its diverse benefits to our economy and society."

Partnering with WE ARE GOLF, Topgolf offered free five-minute lessons at each of its 13 U.S. locations with slow-motion video swing analysis through the Topgolf U instructional program

**The Lone Star state was well represented** at this event by GCSAA Government Relations Committee Member Ken Gorzycki CGCS and Field Staff Representative Brian Cloud. In addition to participating in all of the National Golf Day activities, they personally met with Texas Congressman Mike Conaway from the 11<sup>th</sup> Congressional District. Rep. Conaway was very supportive and appreciative of the golf industry in Texas.

Gorzycki and Cloud also met with representatives from the offices of Senator John Cornyn and Ted Cruz. Both of these meetings were also very productive and focused on the environmental benefits of golf courses. Several legislative issues were discussed including the EPA's ruling on Waters of the US, the H-2B Visa Program, and the Texas drought.

Cathy Harbin, Vice President, Public Golf of ClubCorp also participated in each of these meetings and spoke about the economic, recreational and charitable benefits of golf.

### **#1 Reason the Average Golfer Can't Hit 200+ Yards**

#### **Recommended Video**



#1 Reason the Average Golfer Can't Hit 200+ Yards...

[Watch Video »](#)

# RINEHART TRUCKING

**Golf Course & Athletic Field Materials**

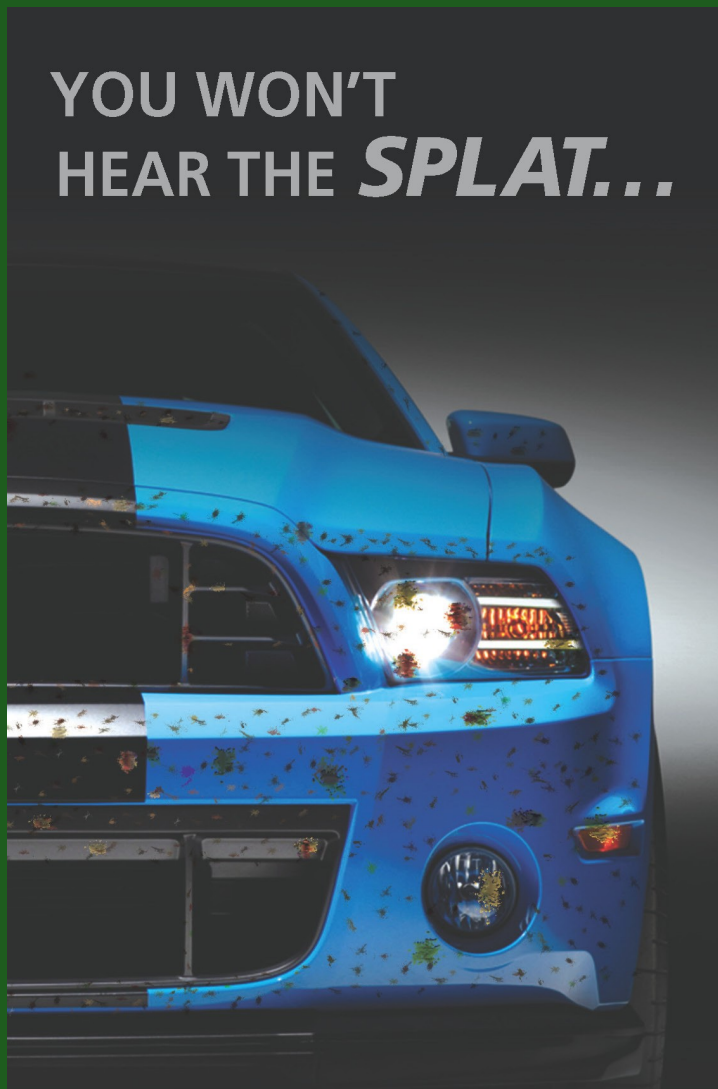
- |                     |                              |
|---------------------|------------------------------|
| <b>Top Dressing</b> | <b>USGA Sand &amp; Mixes</b> |
| <b>Bunker Sand</b>  | <b>Rock</b>                  |
| <b>Mulch</b>        | <b>Fill Dirt/Bank Sand</b>   |

**We offer several materials for your Maintenance and Construction needs.**

**Sue Rinehart Warren**

Ph: 281-432-7263      800-831-SAND (7263)  
 Fax: 888-223-2924      suehart@sbcglobal.net

**Providing Quality & Service in the Houston and surrounding areas for over...**



**YOU WON'T HEAR THE *SPLAT...***

## PUMPING STATION SALES & SERVICE



**PUMPS, MOTORS & CONTROLS, INC.**



PO Box 841383, Pearland, TX 77584

Office: 281-485-4670 Fax: 281-485-5020

Sales: 281-772-0362 Service: 832-256-8983

<http://www.pmc-service.com>      [info@pmc-service.com](mailto:info@pmc-service.com)

*Intelligent Use of Our Natural Resources*



- Inspections
- Intake Screens
- Wet Wells
- Foot Valves
- Floating Intakes
- Silt Removal
- Welding & Fabrication
- Pump Repair Shop
- Parts & Service
- Pump & Motor
- Control Valves
- PLC's & HMI's
- VFD Controls
- Conv. Controls
- Upgrades
- Retrofits
- Remote Monitoring



**BUT THE BUGS ARE JUST AS DEAD.**

Choose the power and speed of **Zylam® Liquid** to stop the insects that attack your clients' trees and ornamental plants. Zylam Liquid controls more than 100 sucking and chewing insects including:

- Scale
- Aphids
- Borers
- Thrips
- Lace bugs
- Mealybugs

***Insects Move Fast. Run 'em Down with Zylam® Liquid.***

**For more information visit [GordonsProfessional.com](http://GordonsProfessional.com) or call Ernie Francois at 512.507.0699**



Always read and follow label directions. Gordon's® and Zylam® are registered trademarks of PBI-Gordon Corporation. 1/15 03816



# Hurt Company

*Reliability in Motion*

3310 Alice Street  
Houston TX 77021  
www.hurtco.com  
www.reladyne.com

Contact: Carl Tolbert  
713.320.5947 (P)  
281.789.4291 (F)

Carl.Tolbert@RelaDyne.com



"Authorized Marketer"  
Customer-Focused Solutions  
**CHEVRON LUBRICANTS**

Automotive Commercial Industrial DEF Fuel



Quality Petroleum  
Products Since 1958



May 4, 2015

Ridgewood Country Club—Waco, TX

Host: Travis Moore

Today is the last day you can sign up!!

[CLICK HERE](#)

### Schedule of Events

10:30 am Registration Starts-Range Open

11:30 AM Lunch

12:45 pm Registration Closes-Range Closes, Players Meeting, Announcements

1:00 pm Shotgun Start

5:30 pm Scoring and Food/Drinks



Quality Sands

# Turf Materials Inc.

*Quality Materials To Make Your Golf Courses The Best They Can Be*



KEITH WATSON

keith@turfmaterials.com

281-642-4729

Champion Select Topdressing Sand  
Houston Choice White Bunker Sand  
Premier White (crushed) Bunker Sand  
Pro Choice White Bunker Sand  
Custom Blending - Greensmix  
Divot Mix  
Decomposed Granite  
Pea Gravel  
Crushed Limestone



## 469.264.7393

www.turfmaterials.com



P.O. Box 2213  
Rockwall, TX  
75087



### Water BMP (Best Management Practice) Plan

#### ***5 Easy Steps to Getting your Plan Completed!***

***Free Meeting fee (\$60) for any STGCSA member that sends in their BMP Plan to the office!!***

Step 1: [Click Here to see a sample BMP](#)

Step 2: [Download This Spreadsheet](#) to calculate your actual irrigation based on your site specific weather data (ET, Rainfall, Evaporation, etc.), acreage, irrigation system and alternative water sources. Fill in and modify the data in the YELLOW shaded areas in each tab based on your individual facility and the calculations will be done for you. Helpful websites for useful data are listed.

Step 3: Use [This Reference Guide](#) to find helpful websites to collect data and other useful information.

Step 4: [Use this BMP Template](#) to complete your plan.

Step 5: Email you completed plan to [lsgcsa@lsgcsa.org](mailto:lsgcsa@lsgcsa.org)

[Need More Information? Click Here!](#)

# BWI IS ON YOUR TURF

- Custom Blend Fertilizers
- Watering Equipment
- Soil Conditioners
- Algaecides
- Fungicides
- Herbicides
- Insecticides
- Applicators
- Nutrients



**bwi**™ BWI Schulenburg • 800.460.9713  
[www.bwicompanies.com](http://www.bwicompanies.com)



## “Who’s Who”

Welcome to our new and returning members!

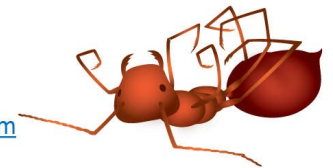
- Jordan Droll-Chief Operating Officer, AmerTurf
- Blake Kercheval-Sales Rep, Jacobsen
- Brian McCloud-Sales Rep, Select Source
- Jeremy Lang-Asst. Supt, Wildcat

[Click Here for All Job Postings](#)



[www.extinguishfireants.com](http://www.extinguishfireants.com)

**Tom Brandon**  
 Cell: 713-826-9745  
[tbran@mastermarketinggroup.com](mailto:tbran@mastermarketinggroup.com)



## ARBOR CARE, INC.

(Tree Care Specialists)

**John Dailey**  
 President  
 713-694-8898

Fax: 713-694-8895  
 336 McFarland Rd.  
 Houston, TX 77060

[www.arborcarehouston.com](http://www.arborcarehouston.com)



*Millions of Branches to Serve You*



## WINFIELD<sup>®</sup>

Helping You Win

### Solutions. Service. Insights.

When it comes to your course, you need a partner that’s consistently above par. Count on us for the right products and the technical insights you need to help your business thrive.

**WinField - Houston**  
 4818 North Sam Houston Pkwy, Suite 100

**Scott Anderson**  
 713-248-4145

**Pat Neuendorff**  
 281-216-9290

[winfieldpro.com](http://winfieldpro.com)

WinField is a registered trademark of Winfield Solutions, LLC.  
 ©Winfield Solutions, LLC, 2015



## BOWLIN CONSULTING

Planning ❖ Design ❖ Mapping



### Turnkey Irrigation Design & Consulting Services

New Construction & Renovation Projects; AutoCad Design; GPS Mapping; As-Built Drawings; Irrigation System Audits; Government Permitting; Water Demand and Water Use Analysis

**Stovy L. Bowlin, PhD, AICP, CGIA, CID**  
 Licensed Texas Irrigator #9265

*Call Dr. Stovy, Lets Talk Water ... Because in our Business, Its all about the Water*

427 Union Chapel Road Cedar Creek, Texas 78612  
 (O) 512-303-7680 (F) 512-303-7681 (C) 512-560-0010

E-mail: [stovy@bowlinconsulting.com](mailto:stovy@bowlinconsulting.com) Web: [www.bowlinconsulting.com](http://www.bowlinconsulting.com)

### PLATINUM 2015 SPONSORS



### GOLD 2015 Sponsors



www.hh-nams.com  
Distributed by  
Resource Laboratories  
713-419-9750

