

TEE TO GREEN



The Official Publication of the South Texas Golf Course Superintendents Association



Wildcat Golf Club

Meeting Schedule

October 25, 2017
Wildcat Golf Club (Toy Drive)

November 13, 2017
Annual Meeting and Past Presidents Luncheon
Pineforest Country Club (Toy Drive)

January 17, 2018
Pesticide Renewal Class
Bear Creek Extension Office

January 29, 2018
River Ridge GC
Chili Cook Off and Golf!

February 8, 2018
Lone Star Reception
Golf Industry Show San Antonio
Hard Rock Cafe

March
Memorial Park GC

April 17, 2018
Scholarship Tournament and Live Auction

[Register Now for Any Meeting!](#)

After the Flood.....

With most of you hard at work reconstructing your damaged golf courses, we haven't had much time for reflection on the positive things that have come from this devastating storm called Harvey. Despite the tragic instances of displacement and people stranded and homes lost, there were inspiring stories that will hopefully restore our hope in the human spirit. We all know about Gallery Furniture Owner, Mattress Mack who opened his doors to people needing shelter. From the SWAT team to the National Guard to the Cajun Navy and just plain civilians, volunteers went from apartments to houses from room to room to make sure no one was left behind. The lesson here is: Don't fixate on what doesn't matter. Don't get sucked in to the trivial again. People were dying and hundreds of thousands of people were hurting yet the storm brought out the best in people and proved what it means to be an American. #HoustonStrong



October 25, 2017 (Wednesday!)

Wildcat Golf Club

Host: Ben Fultz

Registration begins at 9:30
Meeting 10 -11
Lunch 11-11:45
Golf 12:00 Shotgun Start
(you must arrive by 10:15 to golf)
Format: TBA

Don't forget about Top Ten Points to those that are in the meeting as well as those that golf!

[CLICK HERE TO REGISTER!](#)



**Just like last year!
Donate a new toy and
receive 2 mulligans!!**

or bring \$20



Presidents Message: Chris Lineberger

I hope that everyone is on their way to recovery after Harvey. Seeing firsthand some of the devastation and destruction it caused, has been an eye opening experience. One thing is certain, if there is any one group of people who will rebound and come back stronger, it is definitely a golf course superintendent. If any of you had damage done personally, I certainly hope you reached out to ask for some assistance from the association. We have been very blessed to have several different people and organizations reach out to offer financial aid in your recovery. We are still going through the requests and final donations to start the distributions. I want to thank each and every one of you who were generous to aid those in need during these times.



I would like to thank Carter, Tim, and the entire Golfcrest staff for hosting the Pro/Super tournament. Next up on the schedule is Wildcat and Ben Fultz. Bart Fox is set to speak for this event. We are set to close out this year with the annual meeting at Pine Forest. This could change due to the damage of their clubhouse, so please keep a look out for changes!

Kind Regards,
Chris Lineberger



November 13, 2017

Pine Forest Country Club

STGCSA Annual Meeting

Host: Scott Terry

Cost for Meeting/Lunch Only - \$20

Cost for Meeting/Lunch/Golf - \$60

Past Presidents Lunch Gratis (half price for Golf)

Registration begins at 9

Education 10 - 11

Lunch 11-12

12 pm shotgun start



Just like last year!

**Donate a new toy and receive 2
mulligans!!
or bring \$20**

Top Ten Points to those that are in the meeting as well as those that golf!

CLICK HERE TO REGISTER



WINFIELD®
Helping You Win

Solutions. Service. Insights.

When it comes to your course, you need a partner that's consistently above par. Count on us for the right products and the technical insights you need to help your business thrive.

WinField - Houston
4818 North Sam Houston Pkwy, Suite 100

Scott Anderson
713-248-4145

Pat Neuendorff
281-216-9290

winfieldpro.com



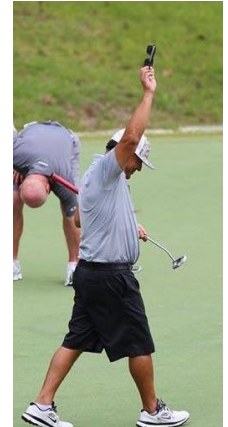
WinField is a registered trademark of Winfield Solutions, LLC.
© Winfield Solutions, LLC, 2015

**Congratulations to Carl Tolbert
and Ed Martinez!**



Together they won their member guest tournament at High Meadow Ranch on August 4th. Carl said, "Saturday I shot a 74 and Ed a 71."

And we are plus 9 on our quota of 66 points = 75 points Sunday we played a scramble and on our 1st hole I made an eagle and we had a 62 gross and made 20 points on a quota of 35.75 = 55.75 for the win. The four flight winners had a 4 hole playoff and we won that!"



This is Helena Houston & We've Got You Covered!

Colt Phillips
phillipsCB@helenachemical.com
832-596-8532

Eric Glover
glovere@helenachemical.com
409-766-0828

Chris Webster
websterc@helenachemical.com
281-785-2095



Helena, CoRoN, KickStand, Reservoir and People...Products...Knowledge... are registered trademarks of Helena Holding Company. Renova is a registered trademark of Valagro. Always read and follow label directions.
© 2015 Helena Holding Company.

People... Products... Knowledge®

TEXAS SPORTS SANDS

**Exclusive Products.
Superior Service.
Outstanding Results.**

- **Economical, on-site custom blending for small and large volumes**
 - Higher quality blend than bucket blending
 - Portable and efficient operation even in tight spaces
- **Aerification and ultradwarf topdressing sands (meets USGA specs)**
- **High penetrometer bunker sands, including:**
 - Exclusive supplier for Bunker White (crushed marble) and Arkansas White (crushed quartz)
 - Tour Blend
 - Pro Blend



Request a Consultation & Quote
972.276.5989 TexasSportsSands.com

In case you missed it.....**Understanding Fungicide Resistance****By Dr. Richard Latin, Ph.D.**

Everyone engaged in establishing and maintaining healthy turf should be familiar with the term fungicide resistance. In many cases, resistance is a contributing factor in unsatisfactory fungicide performance. Fungicide resistance occurs when a once-

effective active ingredient is no longer able to stop pathogen growth and control disease. The phrase “once-effective” is essential to understanding fungicide resistance. It implies that something has changed in the pathogen to reduce the efficacy of a fungicide. The change is genetic, meaning the resistance trait can be passed on to future pathogen generations. Pathogen strains that are not resistant are said to be sensitive -- i.e., sensitive to a fungicide’s effect. Although the term “insensitive” is sometimes used to describe fungicide resistance, the term “resistant” is used here with the understanding that there are different degrees of resistance depending on the pathogen and fungicide. This narrative provides an overview of fungicide resistance, addressing the fundamental elements and practical consequences as it relates to turf disease control.

[Click Here to Read More](#)**JAMIE KIZER**

Area Sales Representative

E: jamie.kizer@trimaxmowers.com

M: 512-755-0159



A: 1145 Uniform Road, Griffin, GA 30224

P: 1-800-523-1167 F: 1-800-830-7264

**BOOK A
FREE DEMO
1-800-523-1167**

Sonny DuBose Memorial Distinguished Service Award

If you feel strongly that a Member is deserving of this recognition, we ask that you submit to our Board of Direc-

tors a single page recommendation expressing your support and reasons for the nomination. We ask that you return this letter to us by October 30th, 2017. A committee appointed by the Board of Directors will then evaluate *all submissions before presenting a slate of candidates to our membership for a vote at the annual meeting.*

FOLLOW US!

Follow us! trimaxmowers.com

2017 Texas A&M Turfgrass and Landscape Field Day October 11th, 2017



We invite you to attend the 2017 Texas A&M University Turfgrass & Landscape Field Day on October 11th, 2017 where Texas A&M University turfgrass faculty, staff, and students will present a field tour of topics on:

- Turfgrass selection and management
- Irrigation management and drought recovery
- Turfgrass and Ornamental Pest management
- Golf Course Fairway and Sports Field Construction
- New technologies and educational demonstrations
- And more!

Schedule of Events

7:45 to 8:30 a.m.	Registration, Coffee, & Refreshments
8:30 a.m.	Official Welcome
8:45 a.m. to 12:00 p.m.	Concurrent programs and field tours
12:00 to 1:30 p.m.	Lunch (pre-registration required)

Location & Parking

The main event will be located at the NEW Scott's Miracle-Gro Facility for Lawn & Garden Research on F&B Road. All participants are asked to park at the Thomas G Hilderbrand, DVM '56 Equine Complex at 3240 F&B Road in College Station adjacent to the Turfgrass Field Lab. Signage and attendants will direct you to registration and events.

Pre-Registration is required!

Please register using the following link

[Click Here](#)

Questions?

Please contact Alisa Hairston @ ahairston1@tamu.edu, 979-845-0884, or 979-458-2568

Play and Stay: The World's finest golf resorts....



GCSAA **This Week**

Member-Get-A-Member

Sign up your assistant, EM or any friend in the industry for GCSAA membership, and you'll get a \$50 GCSAA gift certificate for each new member. The certificate can be used for merchandise, GIS registration or even your own dues. [Click here for application.](#)



Welcome New Member: Sandra Burton, President of PondHawk by LINNE Industries.

Zach Boudreaux, Sales and Design at Turf Drainage of America
AJ Cundiff-Sales Consultant for Floratine—Sterling Golf Management
Mike Powers—Business Development Manager, Civitas/Suncor

[Click Here for All Job Postings](#)



Reliability in Motion

3310 Alice Street
Houston TX 77021

www.reladyne.com

Contact: Carl Tolbert

713.320.5947 (P)

281.789.4291 (F)

Carl.Tolbert@RelaDyne.com

Automotive Commercial Industrial DEF Fuel



"Authorized Marketer"
Customer-Focused Solutions
CHEVRON LUBRICANTS



**Quality Petroleum
Products Since 1958**

Drainage and Construction

SEPTEMBER 19, 2017 BY ANDY JOHNSON IN GOLF COURSE ARCHITECTURE

Drainage

Drainage is a fundamental piece of golf course architecture. If a course doesn't drain well it will rarely play well. Therefore, figuring out how to move water off the golf course is one of golf course architects primary worries. There are two ways that an architect can move water; the natural land or through manmade drainage systems. Here is a little about each.



Surface Drainage

The most natural and preferred method of drainage is surface drainage. It is simple and entails using the land to move water off the course and into streams and other receptacles. Surface drainage is a factor that architects must consider when routing the course.

Surface drainage was the method used by the Golden Age Architects. Seth Raynor and George Thomas (and his construction partner Billy Bell) were renowned for their abilities in this field.

A great example of surface drainage is Riviera C.C., long time host of the L.A. Open. When it receives rain (like it did this year) water runs quickly off the golf course into Riviera's ditches. This great drainage allows the course to play firm and fast more often than most courses.

The benefit of using surface drainage is it is the most cost effective method. It delivers the most natural and best visual aesthetics. It will also lend itself to the best playability because of the lack of drains.

Drainage systems

It is always ideal to avoid drainage systems when possible. They cost money and require construction. Unfortunately, not every land site possesses the property to use strictly surface drainage. For these courses, drainage systems become a necessary and critical aspect to the golf course.

Drainage systems can make an architect's life very difficult. Creating a natural aesthetic while using a drainage basin is one of the toughest tasks.

One issue that arises with using drainage systems is the water tends to settle around the drain. This will create a softer area where grass doesn't grow as quickly and firm conditions cease to exist.

Geoff Shackelford put together a nice video on surface drainage and catch basins.



Read more articles at:

[The Fried Egg](#)

[Geoff Shackelford Verified account](#)

[@GeoffShac](#)

There is still time to nominate a deserving member for the
 Sonny DuBose Memorial Distinguished Service Award

The Winner will be announced at the January 2018 first meeting

The South Texas Chapter of the Golf Course Superintendents Association of America is pleased to inform you of our tenth annual Sonny Dubose Memorial Distinguished Service Award.

Recognition is what the Sonny Dubose Award is all about, letting someone know their hard work and dedication is appreciated. Anyone (superintendent or vendor) who has made an outstanding contribution to the advancement of the golf course management profession and the success of the STGCSA should be nominated. Still, a superintendent who has had an outstanding year deserves to be and should be nominated for the award. By adding a distinguished service aspect to it, we will hopefully increase nominations and be able to recognize more of those deserving members. Contact any past winner of the award or a STGCSA board member to submit a nomination.

Thank you for your consideration in this matter and please send any submissions to: stgcsa@stgcsa.org or hand your nomination letter to a Board member.

From Left to Right: Doug Browne (2011), George Manuel (2014), Carl Tolbert (2016), Terry Gill (2008), Johnny Walker (2009), , John Freeman (2015) Not Shown: Randy Samoff (2010), Steven Chernosky (2012), George Cincotta (2013)



Turf Materials Inc.

Quality Materials To Make Your Golf Courses The Best They Can Be



KEITH WATSON
keith@turfmaterials.com
 281-642-4729

- Champion Select Topdressing Sand
- Houston Choice White Bunker Sand
- Premier White (crushed) Bunker Sand
- Pro Choice White Bunker Sand
- Custom Blending - Greensmix
- Divot Mix
- Decomposed Granite
- Pea Gravel
- Crushed Limestone



469.264.7393
www.turfmaterials.com



P.O. Box 2213
 Rockwall, TX
 75087



HURRICANE HARVEY



Kingwood Country Club—Deerwood (Supt: Ed Martinez)



Riverbend Country Club—(Supt: George Cincotta)



Canongate at Magnolia Creek
(Supt: Chris LePore)

River Oaks Country Club-
(Supt: Morris Johnson)

Galveston Country Club
(Supt: Jeff Smelser)



Lakeside Country Club
(Supt: Terry Hutcherson)

Donations Poured in to help our South Texas Family.....

**WE JUST WANT TO SAY...
THANK YOU!**



- Cameron McDermid and everyone at AmeriTurf
- Carla Boss and Mike Woltz—VGM
- Jeff Kadlec—GLK
- Corby White and everyone at Helena
- Roger Goettsch
- Stan Ludwick
- Russ Cobb—Keeling
- Cameron MacKeller—McKeller Design

- Sandra Burton—PondHawk
- Richard Oaks—Reladyne
- Lone Star GCSA Board of Directors
- Don Farrar—Links Bridge
- Brian Johnson—Sand Hill Farms
- Hudson Valley GCSA
- Met GCSA

Hopefully Nobody was left out! If so, please let me know!


Making Texas **A HEALTHIER
SHADE OF GREEN!**


All Seasons Turf Grass has more than 30 years of experience delivering the very best turfgrass for projects across Texas. We use state-of-the-art technologies to keep costs down while growing healthy, lush grass.

And because we cut to order, when you see All Seasons Turf Grass being installed, you can be assured that it was still growing on the farm just hours ago.

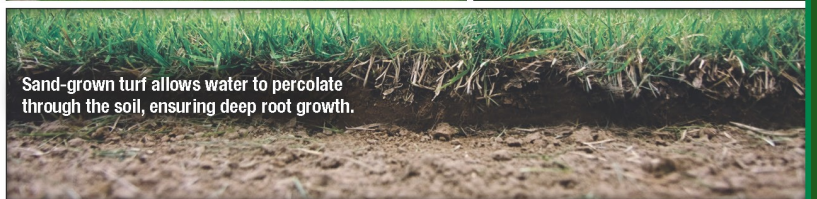
Call us today or visit our main office just west of Houston to see what a difference our grass can make.



32601 F.M. 529 • Brookshire, TX 77423
Phone 281.375.7505 • AllSeasonsTurf.com



Our state-of-the-art equipment helps ensure our grass is lush and healthy year round.



Sand-grown turf allows water to percolate through the soil, ensuring deep root growth.



We cut to order, so every delivery is as fresh and healthy as possible.

JAMIE KIZER
Area Sales Representative

E: jamie.kizer@trimaxmowers.com
M: 512-755-0159



A: 1145 Uniform Road, Griffin, GA 30224
P: 1-800-523-1167 F: 1-800-830-7264

BOOK A
FREE DEMO
1-800-523-1167

Follow us! trimaxmowers.com

Authorized full line distributors of the world's most innovative brands.



Chris Mrosko 713.898.6252 Chris@ameriturf.com
Brent Ratcliff 713.819.1988 Brent@ameriturf.com
Office (877) 441-8873 | www.ameriturf.com



1-800-621-5994
Visit our website @
www.gailsflags.com

Houston Area

Brent Ratcliff
713 - 819 - 1988
brentratcliff@comcast.net

Chris Mrosko
713 - 898 - 6252
cmrosko@cebridge.net



BSI
Burnside Services, Inc.

- Mass Grading
- Golf Course Construction
- Site Construction
- Athletic Field Construction

1110 Navasota Ridge Rd., Navasota, TX 77868
Office: 936-825-7090 • Fax: 936-825-8838
E-mail: bsi@burnside-services.com
www.burnside-services.com



P
M
T
S

"Service and Solutions when you need them!"

- Pumps
- Motors
- Controls

Office: (830)632-5504
GM/ Owner
Ric Martinez : (512)743-7867
Sales & Service
Jr Martinez: (512)743-7869
Rangel Martinez: (512)402-4173

WWW.PMTSERVICE.COM



Brookside
Equipment Sales, Inc.

Golf Sales, Parts & Service
281-373-1087



JohnDeereGolf@BrooksideUSA.com
www.BrooksideUSA.com



GOLF RESULTS!

SEPTEMBER 25, 2017 SUPT/PRO—MEMBER/MEMBER TOURNAMENT

Hosted by Carter Hindes and Tim Phillips, Golfcrest Country Club

Gross:

Supt/Pro Division

1st – 66
Jason Barrington
David Buchheit

2nd – 67
Joe Anderson
Steve Gilley

3rd – 69
Richard Kane
Casey Wade

Gross

Mbr/Mbr Division

1st - 67
Pat Neuendorff
Tanner Chrastecky

2nd – 71
Chris Webter
Brian Johnson

3rd – 71
Phillip Littlefield
Nick Johnson

Net

Supt/Pro Division

1st - 66
Kelly Morgan
Ryan Polzin

2nd – 63
Junior Schuette
Jared Jones

3rd – 68
Sean Wilson
Mark Ripley

Net

Mbr/Mbr Division

1st - 55
Carl Tolbert
Adam Buys

2nd -60
Jack Hargrove
Logan Behrens

3rd - 61
Loren Moulder
Jamie Kizer





Sue Rinehart Warren
281.432.7263

David Johnson
936.522.8589

suehart@sbcglobal.net
RinehartTrucking.com

Golf Course & Athletic Field Materials
Providing materials for Maintenance and
Construction for over 25 years



BWI PROVIDES
THE BEST SELECTION OF PROFESSIONAL PRODUCTS
EXCELLENT CUSTOMER SERVICE
COMPETITIVE PRICES



CUSTOM BLEND FERTILIZERS • NUTRIENTS • ALGAEICIDES
INSECTICIDES • APPLICATORS • WATERING EQUIPMENT
SOIL CONDITIONERS • FUNGICIDES • HERBICIDES
CUSTOM APPLICATIONS

BWI SCHULENBURG
800.460.9713



WWW.BWICOMPANIES.COM

PUMPING STATION SALES & SERVICE



**PUMPS, MOTORS
& CONTROLS, INC.**



PO Box 841383, Pearland, TX 77584

Office: 281-485-4670 Fax: 281-485-5020

Sales: 281-772-0362 Service: 832-256-8983

<http://www.pmc-service.com> info@pmc-service.com

Intelligent Use of Our Natural Resources



- Inspections
- Intake Screens
- Wet Wells
- Foot Valves
- Floating Intakes
- Silt Removal
- Welding & Fabrication
- Pump Repair Shop
- Parts & Service
- Pump & Motor
- Control Valves
- PLC's & HMI's
- VFD Controls
- Conv. Controls
- Upgrades
- Retrofits
- Remote Monitoring



BOWLIN CONSULTING

Planning ❖ Design ❖ Mapping



Turnkey Irrigation Design & Consulting Services

New Construction & Renovation Projects; AutoCad Design; GPS Mapping; As-Built Drawings; Irrigation System Audits; Government Permitting; Water Demand and Water Use Analysis

Stovy L. Bowlin, PhD, AICP, CGIA, CID
Licensed Texas Irrigator #9265

Call Dr. Stovy, Lets Talk Water ... Because in our Business, Its all about the Water

427 Union Chapel Road Cedar Creek, Texas 78612
(O) 512-303-7680 (F) 512-303-7681 (C) 512-560-0010

E-mail: stovy@bowlinconsulting.com Web: www.bowlinconsulting.com

ARBOR CARE, INC.
(Tree Care Specialists)



John Dailey
President
713-694-8898

Fax: 713-694-8895
336 McFarland Rd.

Houston, TX 77060

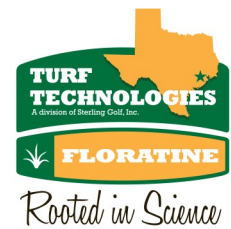
www.arborcarehouston.com

Millions of Branches to Serve You

PLATINUM 2017 SPONSORS



Texas' First Nationally Accredited Tree Care and Landscaping Company



GREENSCAPES SIX



GOLD and Tournament 2017 Sponsors

